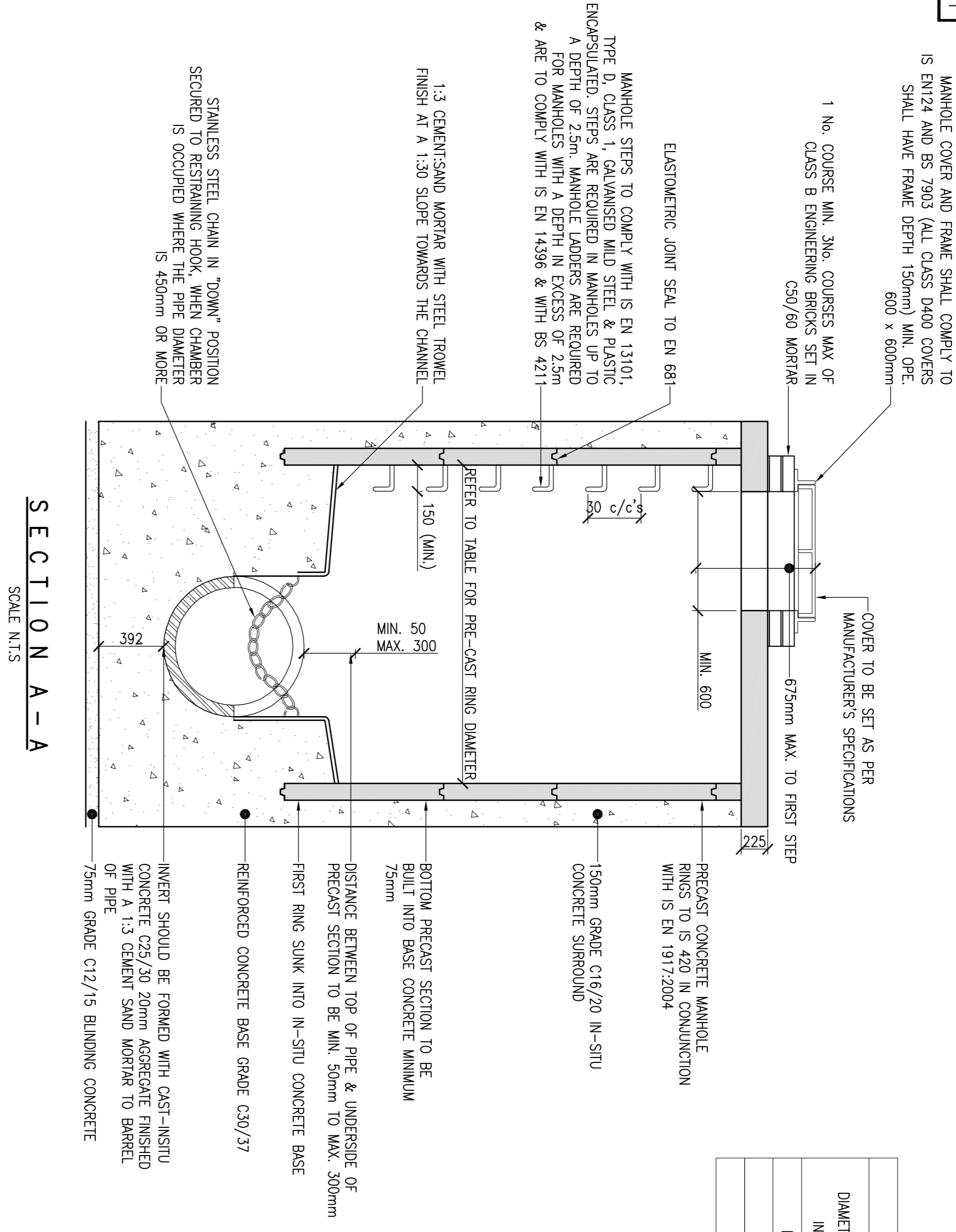
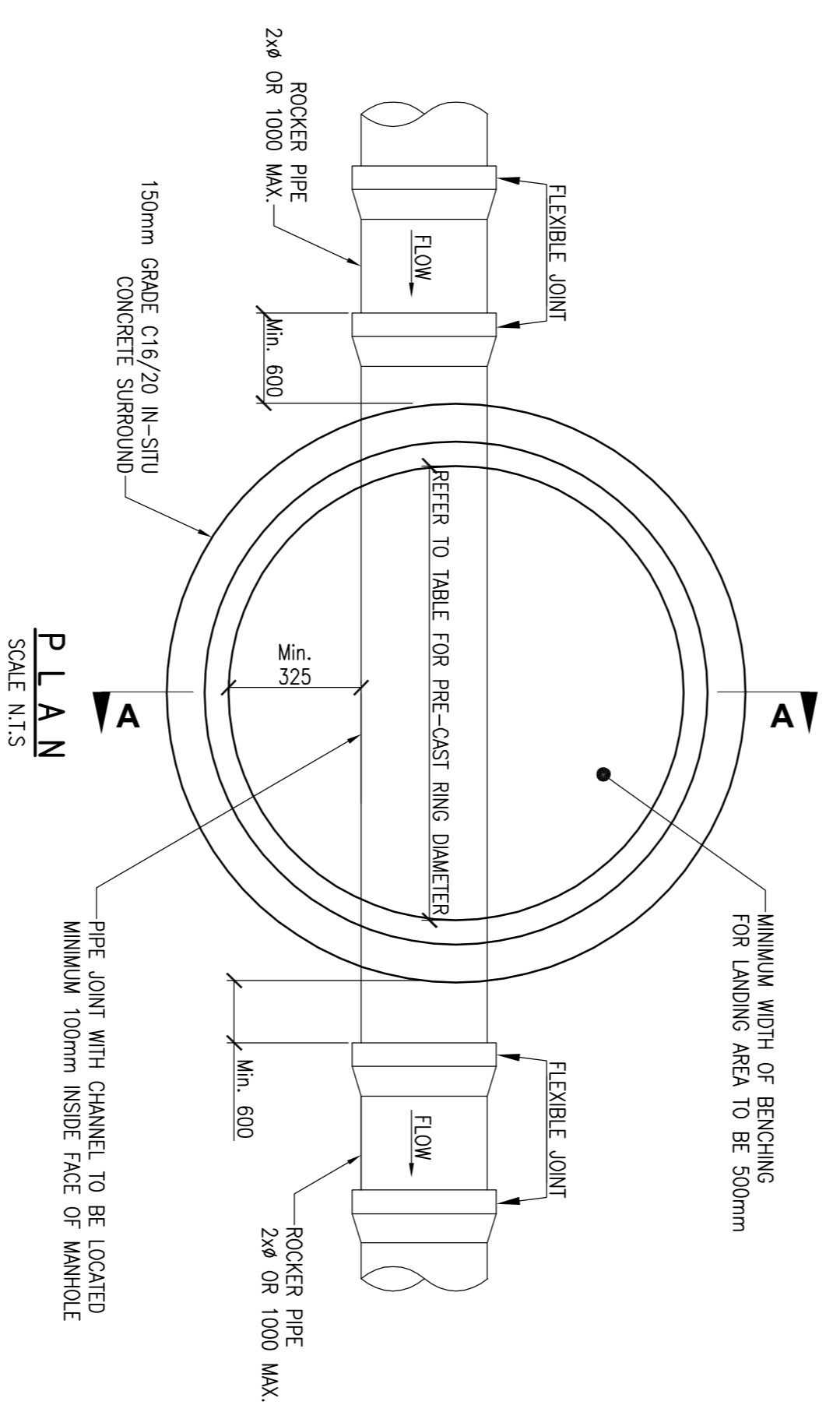


| MINIMUM MANHOLE DIAMETERS | |
|--|-----------------------------------|
| DIAMETER OF LARGEST PIPE IN MANHOLE (mm) | INTERNAL DIAMETER OF MANHOLE (mm) |
| LESS THAN 375 | 1200 |
| 375 TO 450 | 1350 |
| 500 TO 750 | 1500 |

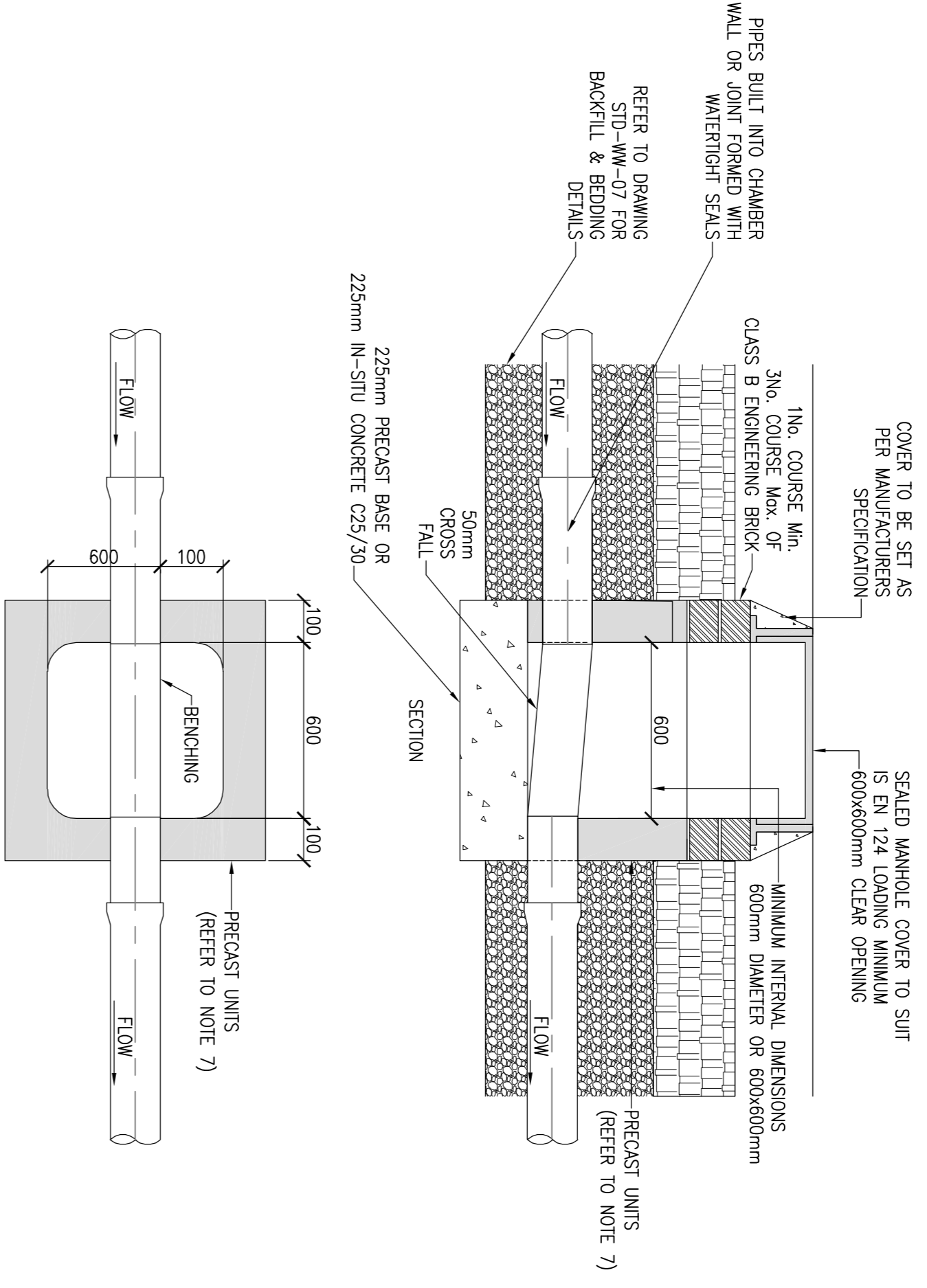


- NOTES:**
1. ALL DIMENSIONS ARE IN MILLIMETRES (mm) UNLESS NOTED OTHERWISE.
 2. PRE-CAST MANHOLES UNITS: COMPLYING WITH REQUIREMENTS OF IS EN 1917 AND BS 5911-PART 3.
 3. THICKER MANHOLE BASES REQUIRED FOR SEWERS IN EXCESS OF 3m DEEP WHERE THE SIZE IS GREATER THAN THE STANDARD MINIMUM SIZE.
 4. APPROVED PRE-CAST CONCRETE BASES MAY BE USED INCORPORATING CHANNELS, BENCHING ETC. SUBJECT TO IRISH WATER APPROVAL AND COMPLYING WITH BS 5911-PART 4: 2002.
 5. STRUCTURAL DESIGN AND REINFORCEMENT DETAILS TO BE PROVIDED BY THE DEVELOPER AND SUBMITTED TO IRISH WATER FOR REVIEW.
 6. MANHOLES GREATER THAN 3m IN DEPTH WILL REQUIRE A DETAILED STRUCTURAL DESIGN AND BE SUBJECT TO IRISH WATER APPROVAL.
 7. MANHOLE ROOFS SHOULD CONSIST OF RE-INFORCED CONCRETE SLAB OF IN-SITU CONCRETE (C30/37 WITH A MINIMUM THICKNESS OF 225mm) DESIGNED TO CARRY ALL LIVE AND DEAD LOADS. ALTERNATIVELY, APPROVED PRE-CAST CONCRETE ROOF SLABS MAY BE USED SUBJECT TO IRISH WATER APPROVAL AND COMPLIANCE WITH BS 5911 PART 4: 2002.
 8. COVERS AND FRAMES SHALL BE SUITABLE FOR ROAD AND TRAFFIC CONDITIONS SUBJECT TO APPROVAL FROM IRISH WATER.
 9. 200mm ALL AROUND, 100mm DEEP CONCRETE PLINCH WITH PROTECTIVE STAINLESS STEEL METAL BAND AROUND COVERS IN GREEN AREAS.
 10. ALL CHAMBERS TO BE CHECKED FOR UPLIFT BY THE DEVELOPER BASED ON GROUND CONDITIONS WITHIN THE SITE. SHOULD ANT LIFTING MEASURES BE REQUIRED THEY SHALL BE SUBJECT TO APPROVAL FROM IRISH WATER.
 11. ALL CONCRETE TO BE IN ACCORDANCE WITH IS EN 206 : 2013.

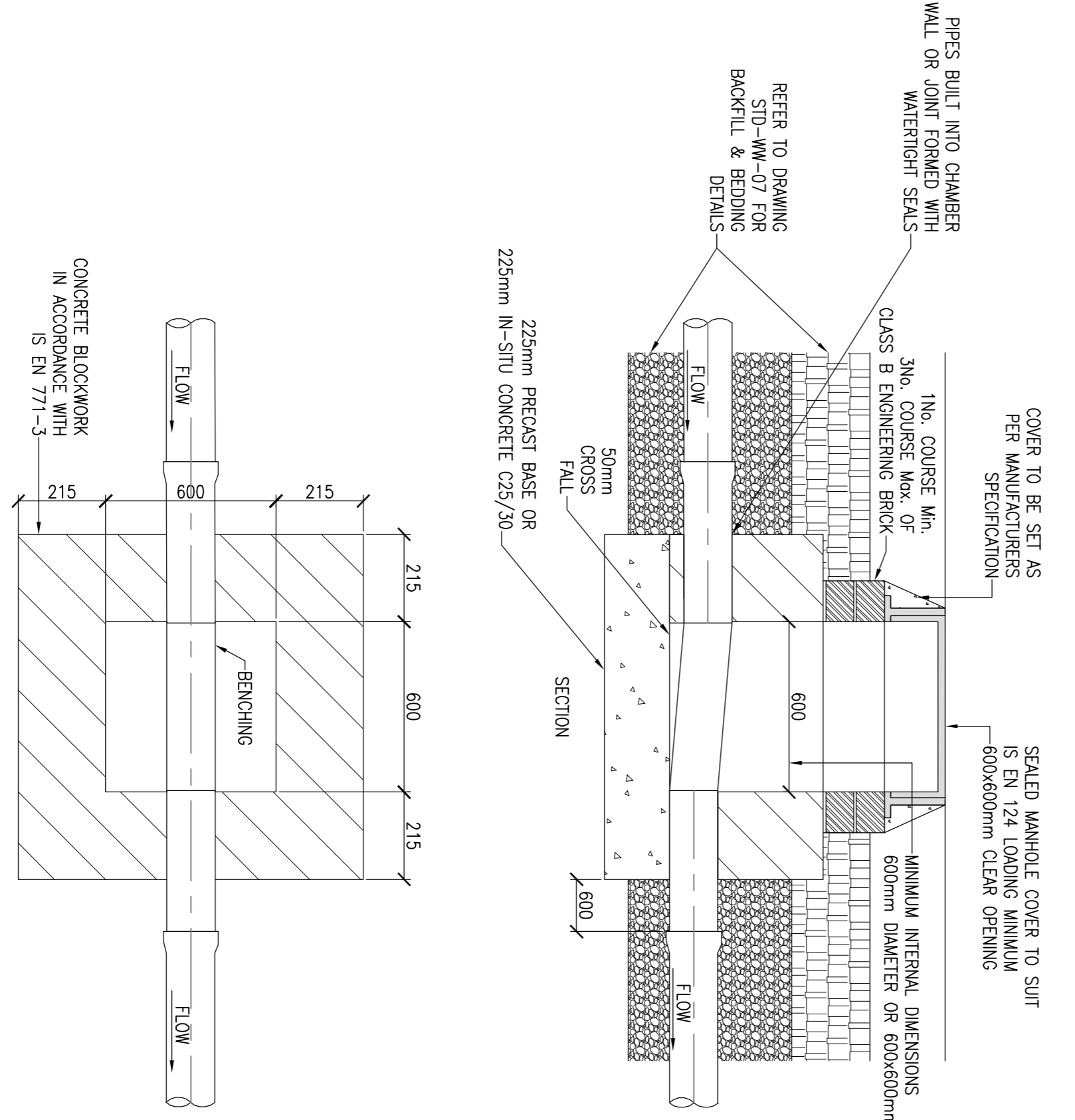


PRECAST CONCRETE MANHOLE
STD-WW-10

- NOTES:**
1. ALL DIMENSIONS ARE IN MILLIMETRES (mm) UNLESS NOTED OTHERWISE.
 2. AN INSPECTION CHAMBER SHOULD BE LOCATED AT OR WITHIN 1m OF THE PROPERTY BOUNDARY AT THE UPSTREAM END OF EACH SERVICE CONNECTION ON THE PRIVATE SIDE OF THE CURB/LAIDG, IF PRACTICABLE.
 3. ANY PIPE AND ASSOCIATED ACCESS UPSTREAM OF THE POINT OF CONNECTION TO A PUBLIC SEWER IS A PRIVATE DRAIN AND SHOULD BE CONSTRUCTED IN ACCORDANCE WITH THE BUILDING REGULATIONS.
 4. ACCESS POINTS SHOULD BE LOCATED SO THAT THEY ARE ACCESSIBLE AND APPARENT TO THE MAINTAINER AT ALL TIMES FOR USE. THEY SHOULD AVOID REAR GARDENS OR ENCLOSED LOCATIONS AND THEY SHOULD NEVER BE OVERLAIN WITH SURFACE DRESSING, TOPSOIL, ETC.
 5. COVERS AND FRAMES SHALL BE SUITABLE FOR ROAD AND TRAFFIC CONDITIONS SUBJECT TO APPROVAL FROM IRISH WATER.
 6. 200mm ALL AROUND, 100mm DEEP CONCRETE PLINCH WITH PROTECTIVE STAINLESS STEEL METAL BAND AROUND COVERS IN GREEN AREAS.
 7. PROPRIETARY PREFABRICATED CHAMBER UNITS MAY ALSO BE USED, SUBJECT TO APPROVAL FROM IRISH WATER.
 8. CONCRETE CHAMBERS SHALL BE SURROUNDED BY A MINIMUM OF 150mm COMPACTED CLAUSE 804 OR CLAUSE 808 MATERIAL AS PER STD-WW-07.



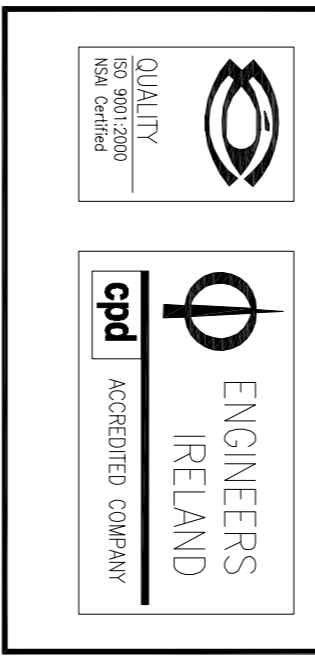
INSPECTION CHAMBER
PRECAST CONCRETE CONSTRUCTION



INSPECTION CHAMBER
BLOCKWORK

PRIVATE SIDE INSPECTION CHAMBER
STD-WW-13

- NOTES:**
- GENERAL NOTES:**
1. THIS DRAWING TO BE READ IN CONJUNCTION WITH ALL RELEVANT ARCHITECTS' SERVICE ENGINEERS DRAWINGS & SPECIFICATIONS.
 2. ALL LEVELS ARE STRUCTURAL UNLESS NOTED OTHERWISE.
 3. ALL WORKS TO BE CARRIED OUT IN ACCORDANCE WITH THE RELEVANT BUILDING REGULATIONS.
 4. DO NOT SCALE - WORK TO FIGURE DIMENSIONS ONLY.



| Rev | Date | Description | Drawn | Checked | Approved |
|-----|----------|-------------------|-------|---------|----------|
| 1 | 24.11.17 | PROGRESS ISSUE | CP | PP | NS |
| 2 | 12.03.18 | FRONT B. REVISION | CP | PP | NS |

| | |
|------------------|--|
| Client: | KILDARE COUNTY COUNCIL |
| Job Description: | SOCIAL HOUSING UNITS CASTLEFIN SALLINS, Co. KILDARE |
| Scale: | PART 8 ISSUE |
| Drawing Title: | IW STANDARD WASTEWATER DETAILS |

| | | | | | |
|-------------|----------|---------------|-------------|--------------|-------------|
| Project No: | 16KK042 | Revision Ref: | C-057 | Page: | PL1 |
| Date: | 10.10.17 | Scale: | A1 - N.T.S. | | |
| Drawn By: | CZUCCO | Checked By: | FRUNCHERON | Approved By: | N.PATTERSON |

Hayes Higgins Partnership
Gas House Lane, Kildenny, Co. Wick
056 774471 | 056 772333 | info@hayeshiggins.com
24 Redmond Street, Galway 3 | 011 832323 | 011 832424